

## Market Village

### Amenities

- 1 Main Entrance(Grand Gateway)
- 2 Ticket Window, Group Consultation Office
- 3 Children Lounge, First Aid Room(Stroller, Wheelchair, Audio guide rental)
- 4 Information Center
- 5 Office

### Things for Purchase

- 7 Agricultural Speciality Shop
- 10 Convenience Store
- 11 Souvenir Shop
- 14 Souvenir Shop
- 15 Souvenir Shop

### Food

- 6 Traditional Café
- 9 Restaurant 'Gilmokjip'
- 12 Restaurant 'KOREA'
- 13 Traditional Snack

\* In the restaurant 'Korea' can hold the banquet of traditional wedding, social gathering, and other group events.

## Amusement Village

### Attractions

- 1 Family Coaster
- 2 Viking
- 3 Music Express
- 4 Carrousel
- 5 Drop N Twist
- 6 Bumper Car
- 7 Bounce Spin
- 8 Railroad Train
- 9 Boat Ride
- 10 Mini-Viking
- 11 Drop N Twist Mini
- 12 Crazy Raft
- 13 Korean Folk Village's Legendary Hometown
- 14 4D Theater
- 27 Snow Sled Field(Winter Season)

### Things for Fun

- 16 Express Photo Funia
- 20 Electronic Game Room
- 22 World Folk Museum
- 25 A Shooting Range

### Things for Shopping

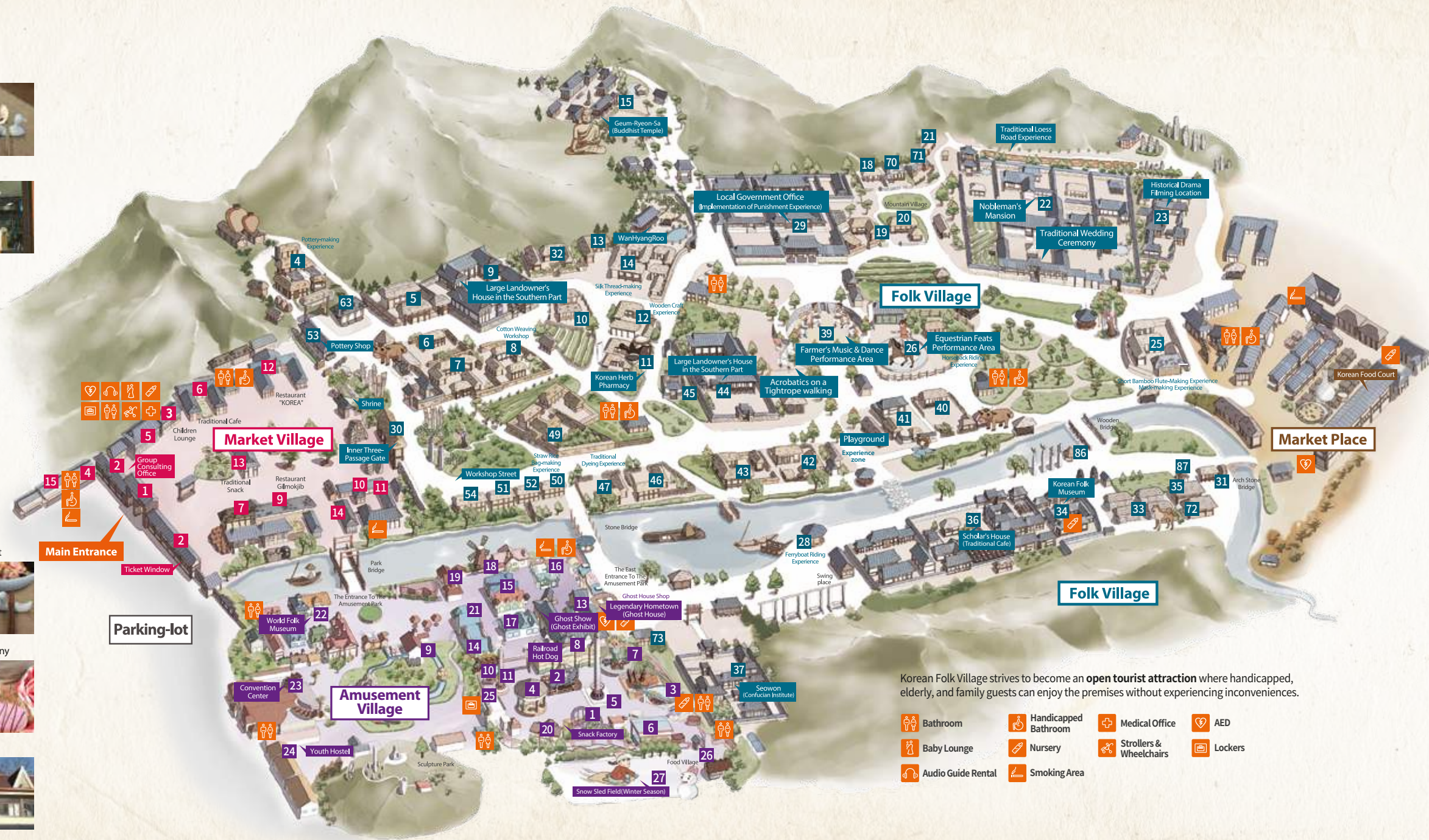
- 13 Ghost Store
- 21 Toy Village

### Food

- 8 Railroad Hog Dog
- 15 Folk Chinese Restaurant
- 17 Dalcom(Icecream, Coffee)
- 19 Happy Pack·WeenyBeeny
- 18 Terrace Green
- 26 Food Village

### Auxiliary Facilities

- 23 Convention Center (Auditorium)
- 24 Youth Hostel



Korean Folk Village strives to become an **open tourist attraction** where handicapped, elderly, and family guests can enjoy the premises without experiencing inconveniences.

- |                    |                      |                         |         |
|--------------------|----------------------|-------------------------|---------|
| Bathroom           | Handicapped Bathroom | Medical Office          | AED     |
| Baby Lounge        | Nursery              | Strollers & Wheelchairs | Lockers |
| Audio Guide Rental | Smoking Area         |                         |         |

## Folk Village

### Housing in the Joseon Dynasty

- 5 20 Farmer's House in the Southern Part
- 6 13 Farmer's House in the Southern Part
- 7 8 House in the Northern Part
- 9 44 Large Landowner's House in the Southern Part
- 10 Farmer's House in the Southern Part
- 15 Keum-Ryeon-Sa(Buddist Temple)
- 18 Farmer's House in the Southern Part (Fortune-telling house)
- 19 41 42 Farmer's House in the Southern Part
- 21 Mountain Village in the Central Part
- 29 Local Government Office
- 30 Inner Three-Passage Gate
- 31 Water Wheel Mill
- 32 House in the Central Part
- 33 House in Jeju Island
- 35 House in Ullung Island
- 37 Seowon(Confucian Institute)
- 40 43 House in the Central Part
- 45 Dutiful Wife's Monument
- 46 House in the Southern Part
- 70 Slate-Roofed House
- 71 Log Cabin
- 72 House in Jindo Island
- 86 Mill Mortar
- 87 Mortar(Worked by Treading)

### Performances

- 22 Nobleman's Mansion (Traditional Wedding Ceremony)
- 26 Equestrian Feats Performance Area(Horseback Riding)
- 39 Farmer's Music & Dance Performance Area

### Beverages

- 11 Korean Herb Pharmacy

### Exhibition

- 34 Korean Folk Museum
- 53 Pottery Shop

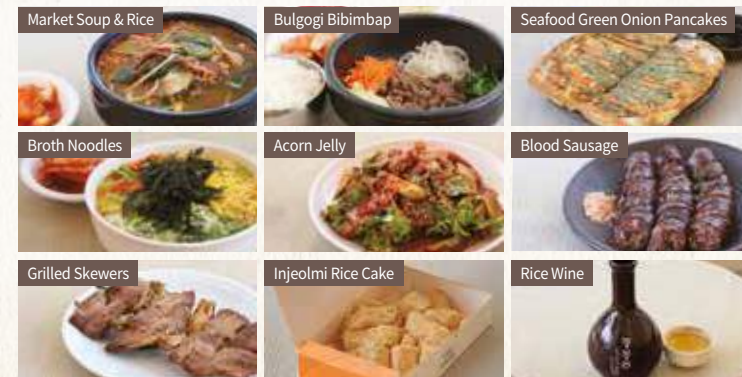
### Workshop-Experience

- 4 Pottery Workshop (Pottery-making Experience)
- 12 Farmer's House in the Southern Part (Wooden Craft Experience)
- 14 Farmer's House in the Central Part (Silk Thread-making Experience)
- 23 Nae Ja-won (Historical Drama Filming Location)
- 25 House in the Northern Part (Musical Instrument Workshop)
- 28 Ferryboat Riding Experience
- 47 Farmer's House in the Southern Part (Traditional Dyeing Experience)
- 49 House in the Central Part (Straw Rice Bag-making Experience)
- 50 Blacksmith's Workshop
- 51 Bamboo, Mask, Straw Shoe Workshop
- 52 Brassware, Tobacco pipe Workshop
- 54 Traditional Furniture, Fans Workshop
- 63 Pyrography Atelier
- 73 Etiquette Education Center

## Traditional Marketplace

### Food

Market Soup & Rice, Inn & Bar, Korean Pancakes, Hand-Pulled Dough Soup, Noodles, Rice Cake Soup, Rice Wine, Jelly, Korean Blood Sausage, Skewers, Traditional Candies, Oil



### Beverage

Marketplace Teahouse

### Rice Cake Dough Pounding Experience

Weekdays (1 session/day) 12:00  
Weekends (2 sessions/day) 12:00, 16:20

\*Rice cake dough pounding event is subject to change depending on weather conditions and other circumstances.

\* Group reservations welcome  
Floor-heated rooms available  
Marketplace information (031-288-2850~1)