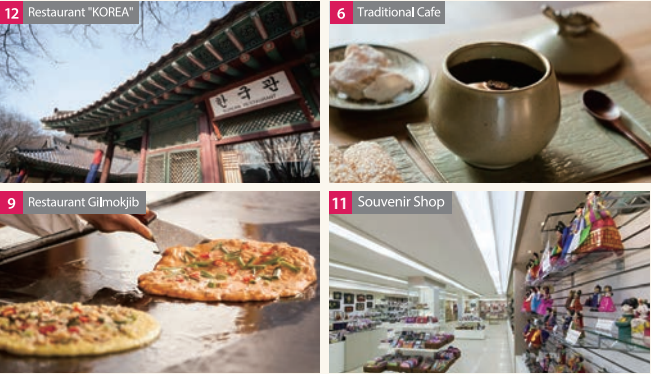


Market Village



- 1

Main Entrance(Grand Gateway)
- 2

Ticket Window
Group Consultation Office
- 3

Children Lounge-First Aid Room
Stroller-Wheelchair
Audio Guide Rental
- 4

Information Center
- 5

Office
- 6

Traditional Cafe
- 7

Agricultural Speciality Shop
- 9

Restaurant "Gilmokjib" **NEW**
- 10

Convenience Store
- 11

Souvenir Shop **NEW**
- 12

Restaurant "KOREA"
- 13

Traditional Snack **NEW**
- 14

Souvenir Shop
- 15

Souvenir Shop

· In the restaurant 'Korea' can hold the banquet of traditional wedding, social gathering, and other group events

Folk Village

- 4

Pottery Workshop
(Pottery-making Experience)
- 5

Farmer's House in the Southern Part
- 6

Farmer's House in the Southern Part
- 7

House in the Northern Part
- 8

House in the Northern Part
(Cotton Weaving Workshop)
- 9

Large Landowner's
House in the Southern Part
- 10

Farmer's House in the Southern Part
(Bamboo Workshop)
- 11

Korean Herb Pharmacy
(Herb tonic tea,
Slip-jeon-dae-bo-tang)
- 12

Farmer's House in the Southern Part
(Wooden Craft Experience)
- 13

Farmer's House in the Southern Part
- 14

Farmer's House in the Central Part
- 15

Keum-Ryeon-Sa(Buddhist Temple)
- 18

Farmer's House in the Southern Part
- 19

Farmer's House in the Southern Part
- 20

Farmer's House in the Southern Part
- 22

Nobleman's Mansion
- 23

Nae Ja-Won
(Historical Drama Filming Location)
- 25

House in the Northern Part
(Musical Instrument Workshop)
- 26

Equestrian Feats Performance Area
(Horseback Riding Experience)
- 27

Mask Dance Exhibition Hall
- 29

Local Government Office
(Implementation of Punishment Experience)
- 30

Inner Three-Passage Gate
- 32

House in the Central Part
- 38

Acrobatics on a Tightrope
Performance Area
- 39

Farmer's Music & Dance
Performance Area
- 40

House in the Central Part
- 41

Farmer's House in the
Southern Part
- 42

Farmer's House in the
Southern Part
- 43

House in the Central Part
- 44

Large Landowner's
House in the Southern Part
- 45

Dutiful Wife's Monument
(Myeongnimun)
- 46

House in the Southern Part
- 47

Farmer's House
in the Southern Part
- 49

House in the Central Part
(Straw Rice Bag-making Experience)
- 50

Blacksmith's Workshop
- 51

Showroom for farming tools
- 52

Brassware workshop
- 53

Pottery Shop
- 54

Traditional Furniture Workshop -
Fans Workshop
- 63

Pyrography Atelier
- 70

Slate-Roofed House
- 71

Log Cabin(Making a traditional kite)
- 73

Etiquette Education Center



- 28

FerryBoat Riding Experience
- 31

Water Wheel Mill
- 33

House in Jeju Island
- 34

Korean Folk Museum
- 35

House in the Ullung Island
- 36

Scholar's House
- 37

Seowon(Confucian Institute)
- 72

Jindo Island
- 86

Mill Mortar
- 87

Mortar
(Worked by treading)

Map of Korean Folk Village

Travel back in the time to a peaceful village of the Joseon Dynasty,
where forests, rivers and heartwarming stories are abundant.

Korean Folk Village is putting effort into building "an open tourist spot" where every disabled person, elderly person, and family with babies or young children can use facilities with no restrictions, providing a barrier-free tourism environment.

Restroom

Stroller & Wheelchair

Beverage

Convenience Store

ATM

Family Toilet

Information Center

Locker

Smoking Area

Disabled Toilet

Audio Guide Rental

Pet Depository

Smartphone Charging Service

First Aid Room

Souvenir Shop

Disabled Parking Lot

Children Lounge

Convenience Store

Phone

Nursery

Restaurant

Amusement Facilities Zone



- 1

Family Coaster
- 2

Viking
- 3

Music Express
- 4

Carousel
- 6

DropNTwist
- 7

Bumper Car
- 8

Bounce spin
- 10

Railroad Train,
Railroad Hot Dog
- 11

Boat Ride
- 10

Mini Viking
- 11

DropNTwist(Mini)
- 12

Crazy Raft
- 13

Korean Folk Village's
Legendary Hometown
- 14

4D Theater
- 15

An Electronic Game Room
WEENY BEENY
- 16

Express Photo Funia
- 17

Dalcom(Iccream, Coffee)
- 18

Terrace Green **NEW**
- 20

Folk Chinese Restaurant
- 21

Toy Village
- 22

World Folk Museum
- 23

Convention Center
- 24

Youth Hostel
- 25

Im-sil Cheese Pizza
- 26

Food Village **NEW**

Performances



	1 st Session	2 nd Session	Venue
Farmer's Music & Dance	10:30	14:00	Performance Area
Equestrian Feats	11:00	14:30	
Fusion B-Boy Dance	11:30	15:00	
Traditional Wedding Ceremony	12:00	16:00	No. 22 (Noble man's mansion)

· This performance can be changed due to weather condition or internal circumstances.
In case of rain, Farmer's Music & Dance can be replaced with Korean traditional percussion quartet .

Market Place



Korean Food Court | A Peddlers' Inn · Acom Jelly · Rice Cake · Mung Bean Pancake · Korean Sausage
Assorted Seafood Pancake · Meat Soup with Rice · Traditional Glutinous Rice Wine
Bibimbap(Assorted Vegetables Mixed with Rice) · Noodles house · Skewered Food Store
Taffy Shop · Oil Shop · Market Place Tea Room

Rice-cake Mallet Experience | Weekday 12:20 / Weekend 12:20,16:20

· It can be changed due to weather condition or internal circumstances.
· Group Reservation & Rooms equipped with Korean floor heating system available
Inquiries +82 31 288 2850 ~1